

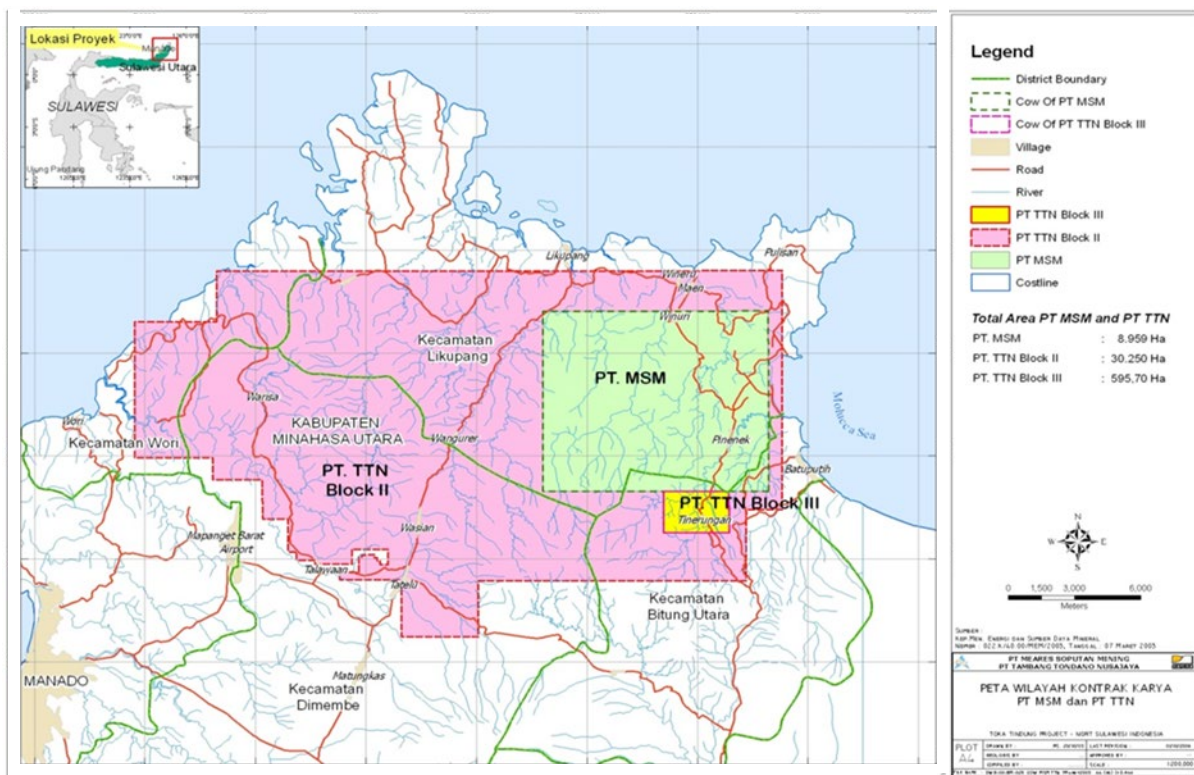
EXPLORATION REPORT
PT Archi Indonesia Tbk.
31st March 2026



PT Archi Indonesia Tbk. (the “Company” or “ARCI”) owns 100% of Toka Tindung Gold Mine, a gold mine located approximately 35 kilometers northeast of Manado, North Sulawesi, through the Company’s wholly-owned subsidiaries, PT Meares Sopotan Mining (“MSM”) and PT Tambang Tondano Nusajaya (“TTN”).

Toka Tindung Gold Mine consists of two Contract of Works (“CoWs”) covering 39,817 hectares, which cover into two administration areas in North Sulawesi, North Minahasa and Bitung City districts (Figure 1). The CoWs are valid until 2041 and held by MSM and TTN. Pursuant to the Mining Law Amendment, MSM and TTN have been guaranteed two times extensions of the CoWs in the form of Special Mining Business License/Izin Usaha Pertambangan Khusus (“IUPK”), each for maximum period of 10 years.

Figure 1. Map Location of MSM and TTN’s Contract of Works



Exploration activities carried out by the Company through its subsidiaries, MSM and TTN, from January to March 2026 were focused on development of gold resources at Toka Tindung Gold Mine.

In the first quarter of 2026, ARCI had conducted drilling at 76 holes with a total depth of 20,793 meters.

The work was performed by PT Maxidrill Indonesia and involved Diamond Drilling (“**DD**”) and Reverse Circulation (“**RC**”) drilling methods. Please refer to Table 1 for the detailed of each drilling method:

Table 1. Drilling Results Details for the Period January to March 2026 Based on Drilling Method

Period	Diamond Drilling (DD)		Reverse Circulation (RC)		Total	
	Number of Holes	Drilling Meters	Number of Holes	Drilling Meters	Number of Holes	Drilling Meters
Jan - Mar 2026	31	12,013	45	8,780	76	20,793
TOTAL	31	12,013	45	8,780	76	20,793

Total Exploration expenditure from January to March 2026 was US\$2.4 million.

The Exploration areas are selectively defined based on the results of previously conducted historical exploration activities, which indicate the presence of prospective mineralization potential. The determination of these areas takes into consideration the available geological data and interpretations, both within and beyond the boundaries of the previously identified pit, with the objective of optimizing the potential for the discovery of valuable mineral resources.

The Geological models have been updated based on the exploration drilling results, and the following is a summary of the significant discoveries:

1. Interval of 4.60m with a gold grade of 10.20 g/t at a depth of 342.30m - 346.90m
2. Interval of 3.35m with a gold grade of 2.10 g/t at a depth of 359.65m - 363.00m
3. Interval of 18.15m with a gold grade of 2.24 g/t at a depth of 182.65m - 200.80m