

PT Archi Indonesia Tbk (IDX: ARCI)

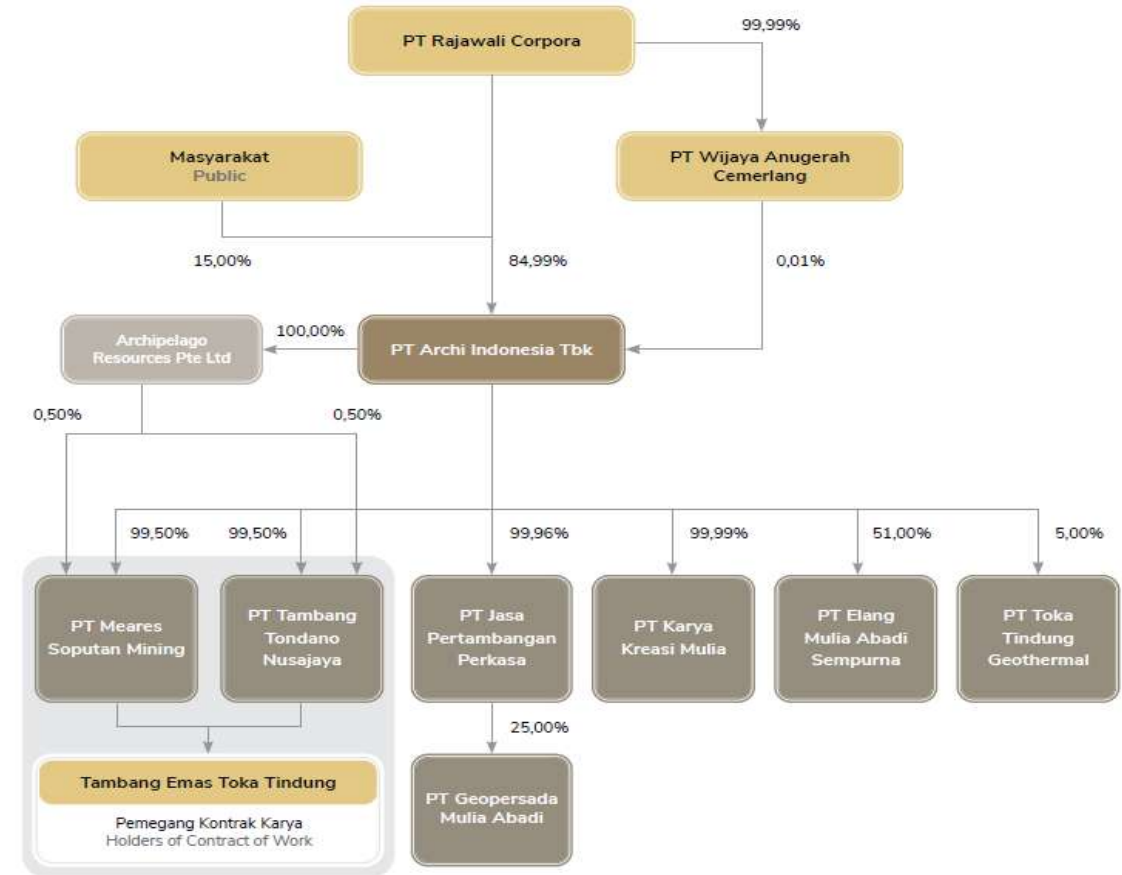
Public Expose 2025

19 June 2025



General Company Overview

Operating Subsidiary & Associates	Gold Mining: <ul style="list-style-type: none"> - PT Meares Soputan Mining (“PT MSM”) - PT Tambang Tondano Nusajaya (“PT TTN”) Mining Contractor: <ul style="list-style-type: none"> - PT Geopersada Mulia Abadi (“PT GMA”) Gold Refiner & Gold Bar / Minted Bar Producer: <ul style="list-style-type: none"> - PT Elang Mulia Abadi Sempurna (“PT EMAS”) Geothermal: <ul style="list-style-type: none"> - PT Toka Tindung Geothermal (“PT TTG”)
Mining Location	North Sulawesi, Indonesia
Operation History	Commenced mining operations in 2009, first gold production in 2011
Concession	39,817 hectares Contract of Work (“CoW”) expires in 2041 & extendable as an IUPK for another 2x10 years
Date of Stock Listing	28 June 2021 through Indonesia Stock Exchange (IDX)
Current Mining Method	Open pit and Underground
Processing Capacity	4.0 Mtpa → Plant Project Optimization is ongoing



Key Highlights – FY 2024

1 The Company successfully booked net positive earning while facing various challenges in 2024.

Below summarizes the Company's Operational & Financial performance for 2024:

- Gold production volume 93.4 koz;
- Gold sold volume 97.1 koz;
- Revenue US\$287.6m;
- EBITDA US\$79.1m; and
- Net Income US\$10.4m.

2 Total net debt⁽¹⁾ was US\$400.0m and the debt to equity ratio ("DER") was 1.47x as of 31 December 2024.

3 Capex realized totalling US\$91.8 million during the year, mainly represents development for mining infrastructure.

4 Underground mining first blast at Kopra pit & accelerate the preparation of developing new pit.

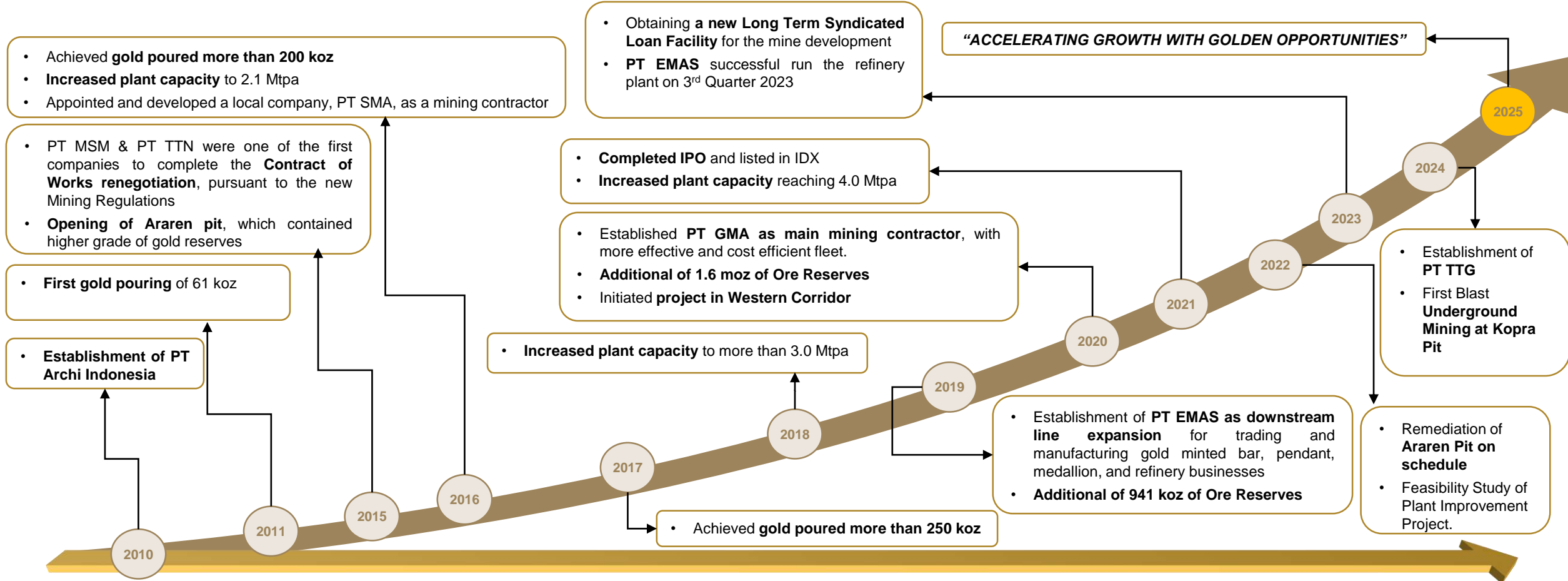
5 The Company established PT TTG a joint venture Company in the renewable energy (Geothermal) sector with PT Ormat Geothermal Indonesia.

Note: (1) Net debt is calculated as the total balance of interest bearing debt reduced by current restricted cash in relation to Debt Service.



Milestones

- Proven track record of exploration activities and gold reserves and resources discoveries
- Sustainable operational growth through multi production pits, processing plant capacity expansion, as well as various cost efficiency initiatives
- Expanding business lines to become an Integrated Gold Mining business



2024 Exploration Realization

Diamond Drilling (DD)		Reverse Circulation (RC)		Total	
Total Drill Holes	Total Meters(m) Drill	Total Drill Holes	Total Meters(m) Drill	Total Drill Holes	Total Meters(m) Drill
212	52,357	215	23,450	427	75,807

- Exploration activities are focused on the increasing of the additional reserves/resources discoveries within the concession area especially from Eastern and Western Corridor area.
- The Company intensively conducts the exploration drilling which result to the high grade identification at some areas. These indication of high grade exploration drilling were identified especially in the Northern part of Eastern Corridor - **Exceptional drilling intercept in Q3 2024 resulted the high grade of 36m interval at 60g/t from 178m to 214m depth.**
- The Company is currently exploring further to identify the continuity of the vein extensions. In parallel, the Company intensively conducts infill exploration drilling to accelerate the conversion of additional ore resources & reserves.
- With Kopra underground phase 1 commenced, **the Company has also identified the continuity of gold vein for further underground potential.**
- Recently, the Company is also requested to present the Exploration Discovery at the **NewGenGold International Conference 18-19 November 2025** in Perth, Australia.

Comparative Gold Intercepts in Q3'24



Source : Miner Deck, October 2024



Downstream Business – Mining Contractor Services – PT GMA

- ❑ PT GMA was established in 2020, whereby the Company owned 25% of its stakes through PT Jasa Pertambangan Perkasa.
- ❑ Within less than 3 (three) years, PT GMA has expanded its operation & became the main mining contractor for the Toka Tindung Gold Mine.
- ❑ PT GMA existing fleet has the capacity to mine ~45 MT p.a of material and currently PT GMA is also looking for expanding its business to another mining site area.



List Assets of 2024	Total Unit
Mine Heavy Equipment	92
Other Supporting Unit	60
Total	152



Downstream Business – Gold Refiner & Gold Bar / Minted Bar Producer – PT EMAS



LOTUSARCHI

Taping into Downstream Market - Minted Bar Business

- PT EMAS, established as a JV Company in 2019 between Archi Group & Lotus Group*.
- First product launch is **“Emas Merah Putih”, Proudly Made Indonesia**, a gold bar product equipped with CertiEye barcode security.
- Other products launched such as paper gold, mini gold and customized minted bar/pendant.
- PT EMAS is also producing gold bars in 250g, 500g, and 1kg with a purity of 999.9 and duly certified by SNI.

Refinery & Trading Business

- PT EMAS expanded its business into Refinery and Trading Business.
- The Refinery facilities has 30 tons per annum gold refining capacity.
- Several gold mining companies in Indonesia has continuously refine their Dore Bullion (which is typically mixture of gold and silver) to 99.99% gold & 99.95% silver granules at PT EMAS Refinery facilities.

Key Achievement:

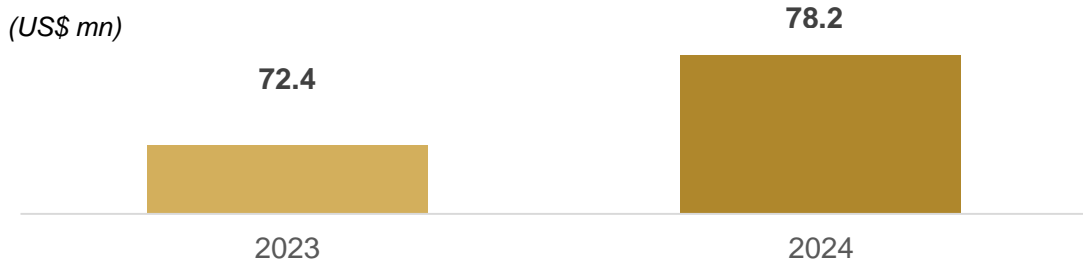
- Collaborated with Warner Bros for products with theme of Justice League, Harry Potter, Looney Tunes, etc.
- Collaborated with Disney for product with theme of Monster Inc., Toy Story and UP!, Tsum Tsum, etc.

Future Plan

- New product launch for 2026 international event

PT EMAS Total Revenue

(US\$ mn)



*one of Indonesia’s major players in gold jewelry market with extensive outreach locally and internationally



Geothermal Business – PT Toka Tindung Geothermal

Entering to Geothermal Power Plant Business

- PT TTG is a JV Company between PT Archi Indonesia Tbk and PT Ormat Geothermal Indonesia (“Ormat”), established in 2024.
- Ormat is a leading renewable energy provider with a strong track record in geothermal and energy storage, having built approximately 190 power plants and installed around 3,400 MW of geothermal and REG (Recovered Energy Generation) capacity to date.
- PT TTG obtained its Geothermal Permit on 13th June 2025.

Project Location

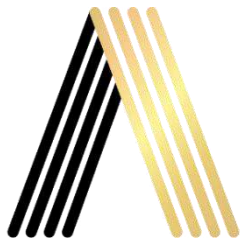
- Bitung City, Ranowulu District, Pinasungkulan Sub district.

Capacity Target

- 40 Mega Watt (MW).

Next Plan

- Obtain Environmental Permit.
- Further exploration to confirm temperature and resource size.



Underground Opening in 2024

Underground Opening (5th December 2024)

On 5th December, 2024, ARCI had its underground first blast at Kopra pit, marking the start of its underground mining development



Underground Current Progress as of June 2025

As of 2nd week of June 2025, Total our underground development are approx. 425 meters



CSR & Awards



HEALTH

- First 1000 days of life program
- Integrated Healthcare Center (2024: 1,728 person)
- Integrated care for the Elderly (2024: 428 person)



EDUCATION

- Scholarship (2024: 31 person)
- Early Childhood Education (2024: 20 Schools)



ECONOMIC

- Integrated agribusiness of coconut, corn (2024: 16 Farmers group)
- Poultry cultivation
- Garment Cooperative
- Cattle livestock assistance



SOCIAL CULTURE

- Worship facilities and/or infrastructure as well as relations in the religious sector
- Participation in preserving local culture and wisdom



INFRASTRUCTURE

- Clean water program
- Chicken coop construction
- Renovation of school/building/classrooms



Penghargaan Pencegahan Stunting 2023 – Partisipasi Program Kemitraan CSR untuk Pemberian Bantuan Bagi Balita Stunting Dalam rangka Percepatan Penurunan Stunting 2023

Stunting Prevention Award 2023 – Participation in the CSR Partnership Program for Providing Assistance to Stunted Toddlers as part of the 2023 Stunting Reduction Acceleration Program

Penyelenggara / Organizer :

Bupati Minahasa Utara
Regent of North Minahasa

Tanggal / Date :

April 2024

Penghargaan Pratama – Pengelolaan Standarisasi dan Usaha Jasa Pertambangan Mineral dan Batubara untuk Kelompok Perusahaan Pengelola Usaha Jasa Pertambangan Periode Tahun 2023

Pratama Award – Standardization and Mining Services Management for Mineral and Coal Mining Service Business Group, 2023 Period

Penyelenggara / Organizer :

Kementerian Energi dan Sumber Daya Mineral Republik Indonesia
Ministry of Energy and Mineral Resources of the Republic of Indonesia

Tanggal / Date :

25 September 2024
September 25, 2024



Tamasya Award 2024 – Kinerja Pengembangan dan Pemberdayaan Masyarakat Komoditas Mineral Kategori Implementasi Bidang Kelembagaan

Tamasya Award 2024 – Performance in Community Development and Empowerment in Mineral Commodities, Institutional Implementation Category

Penyelenggara / Organizer :

Kementerian Energi dan Sumber Daya Mineral Republik Indonesia
Ministry of Energy and Mineral Resources of the Republic of Indonesia

Tanggal / Date :

26 November 2024
November 26, 2024

Business Prospects & Focuses 2025

1 Gold production target to grow ~25%.

2 Expanding to develop and mine at new pit.

3 Accelerate the development of underground mining at Kopra pit and identify other underground potentials.

4 Intensively and sustainably conducts the exploration activity on the greenfield/brownfield area.

5 Improvement in gold recovery.





For Further Information, please contact:

Archi Indonesia – Head Office

RAJAWALI PLACE, 27th Floor
Jl. HR Rasuna Said Kav. B/4, Setiabudi
Jakarta Selatan, DKI Jakarta, 12910, Indonesia
Phone : +62 21 576 1719
Email : corsec@archimining.com
Website : www.archiindonesia.com



**Archi
Indonesia**

Thank You!

