



Archi
Indonesia

Archi Indonesia

Company Overview

2021



Archi at a glance



Archi Indonesia (“Archi”) owns two gold mining concessions through PT Meares Soputan Mining (“PT MSM”) & PT Tambang Tondano Nusajaya (“PT TTN”)

| | |
|-----------------------------------|--|
| Operating Subsidiary | PT Tambang Tondano Nusajaya (“PT TTN”) & PT Meares Soputan Mining (“PT MSM”), both are wholly owned subsidiaries |
| Mining Location | North Sulawesi, Indonesia |
| Mine Life⁽¹⁾ | c. 21 years with expansion opportunity |
| Operation History | Commenced mining operations in 2009, first gold poured in 2011, reached gold production above 200 koz in 2018 |
| Concession Area | 39,817 hectares |
| Ore Reserves (2020) | Gold: 3.9 Moz Silver: 8.1 Moz |
| Mineral Resources (2020) | Gold: 5.5 Moz Silver: 11.0 Moz |
| Current Mining Method | Open pit (prospect of underground mining in future) |
| Contract Type & Expiry | Contract of Work (“CoW”), 2041 (and extendable as an IUPK for another 2x10 years) |
| Processing Capacity | 4.0 Mtpa ⁽²⁾ |



| | <u>Gold</u> | <u>Silver</u> |
|-------------------|---|---|
| Production | 2019: 261 koz 2020: 207 koz 2021: 194 koz | 2019: 435 koz 2020: 363 koz 2021: 384 koz |
| Sales | 2019: 273 koz 2020: 214 koz 2021: 188 koz | 2019: 439 koz 2020: 366 koz 2021: 306 koz |

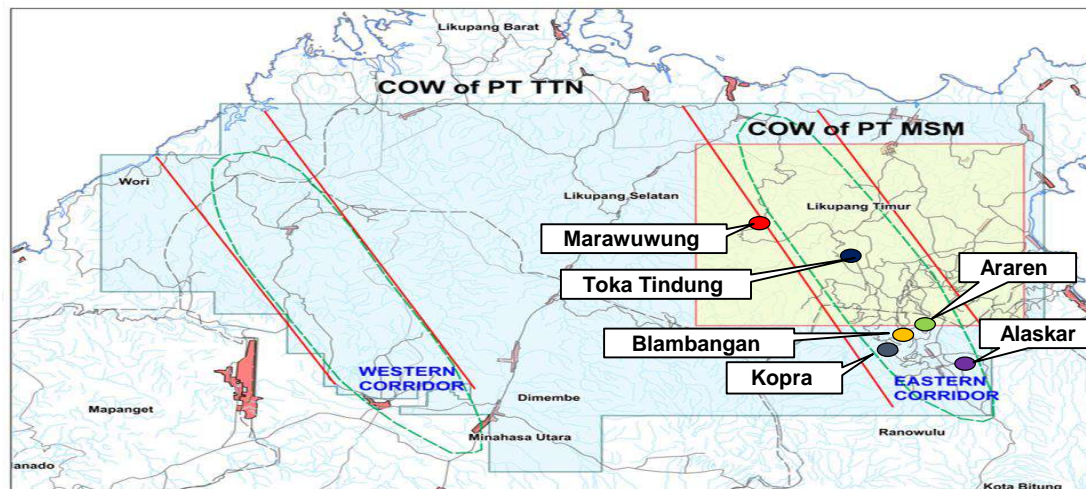
Archi is one of the Largest Pure-play Gold Producers in Southeast Asia, with more than 10 years of Superior and Proven Operation Track Record and Uninterrupted Production History in the Toka Tindung Gold Mine

Source : Company Information
 Note : (1) SRK reserves validation case using mining and stockpiles in later years (2) By the end of 2021

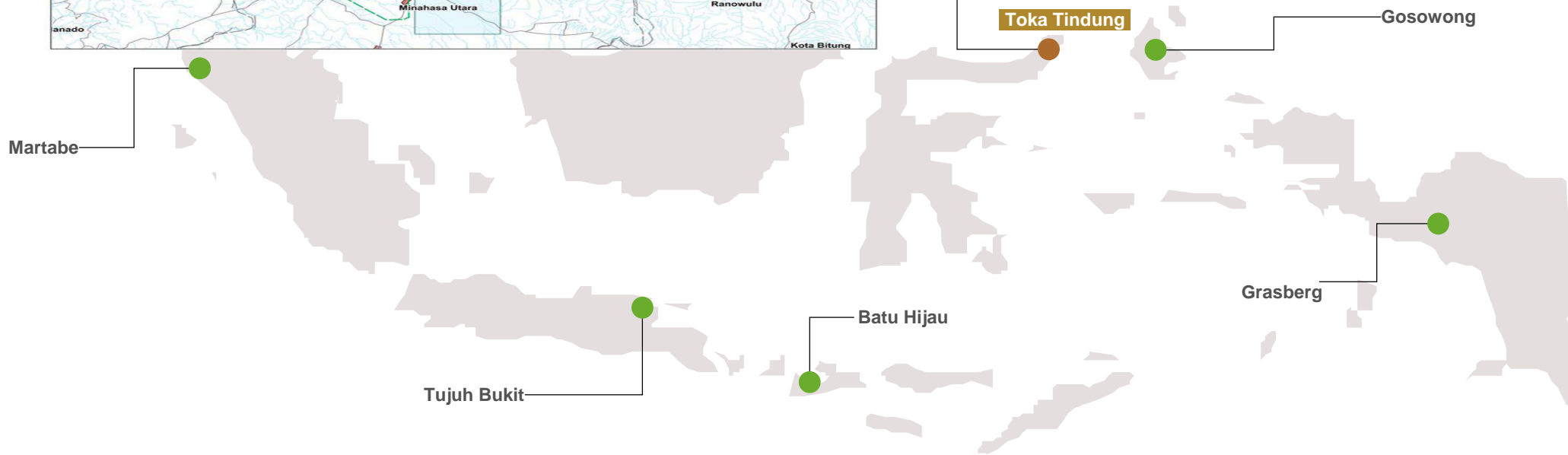
Concession overview

Archi has significant future development potential with high growth prospect

Reserves and Resources: 3.9 Moz gold reserves and 5.5 Moz gold resources as of 31 December 2020



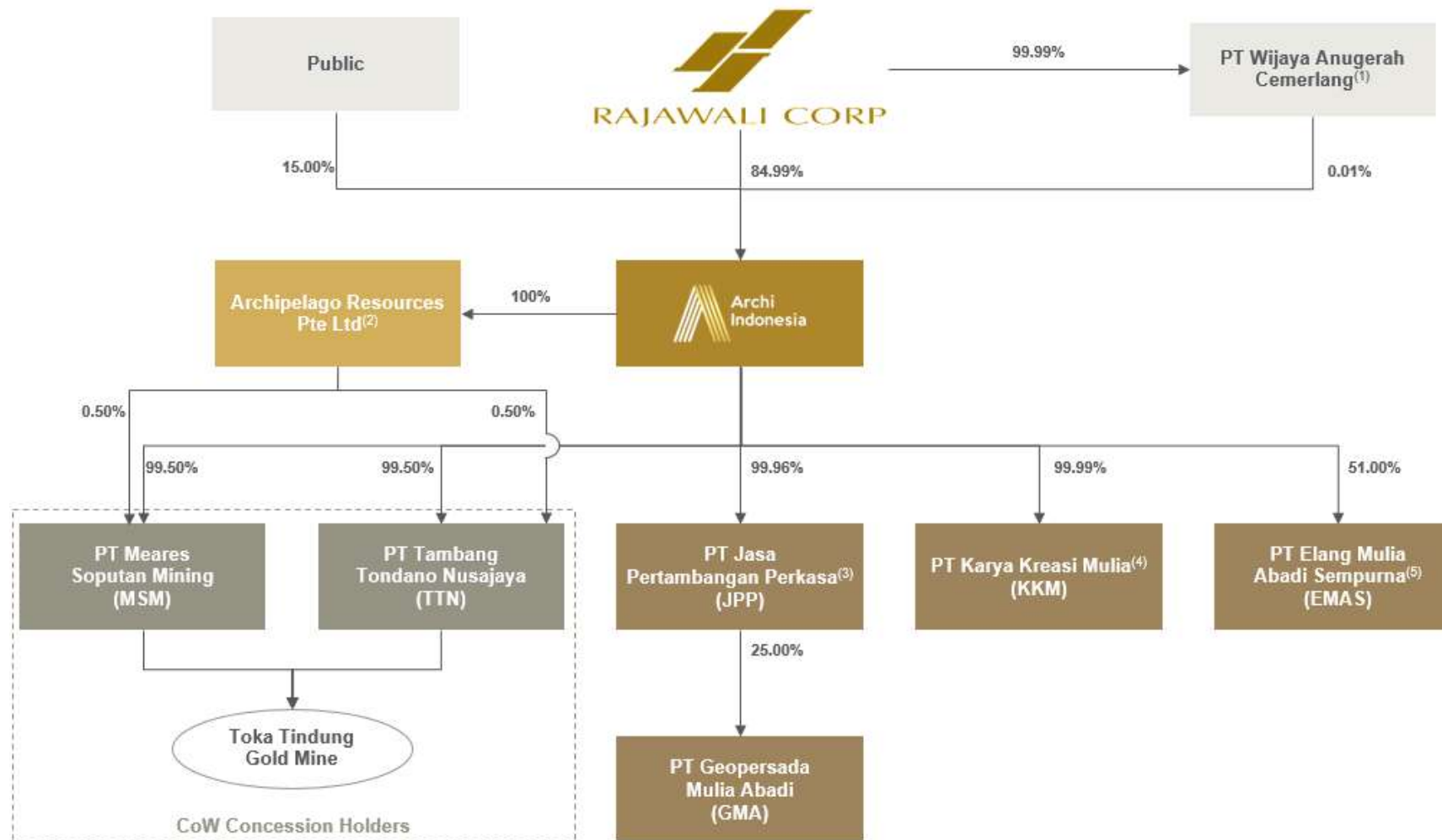
| | | Tonnage (Mt) | Gold Grade (g/t) | Contained Gold (koz) | Silver Grade (g/t) | Contained Silver (koz) |
|--------------------|--------------|--------------|------------------|----------------------|--------------------|------------------------|
| Reserves Category | Proven | 18.2 | 1.1 | 667 | 2.6 | 1,521 |
| | Probable | 80.1 | 1.3 | 3,218 | 2.6 | 6,597 |
| | Total | 98.3 | 1.2 | 3,884 | 2.6 | 8,118 |
| Resources Category | Measured | 19.7 | 1.1 | 696 | 2.0 | 1,583 |
| | Indicated | 97.2 | 1.3 | 3,942 | 3.0 | 7,969 |
| | Inferred | 28.8 | 1.0 | 890 | 2.0 | 1,401 |
| | Total | 145.8 | 1.2 | 5,528 | 2.0 | 10,953 |



Source : Company Information

Group structure

Archi is supported by Rajawali Corpora as its shareholder, a reputable Indonesian conglomerate group with a track record of building world-class operations and creating shareholders' value

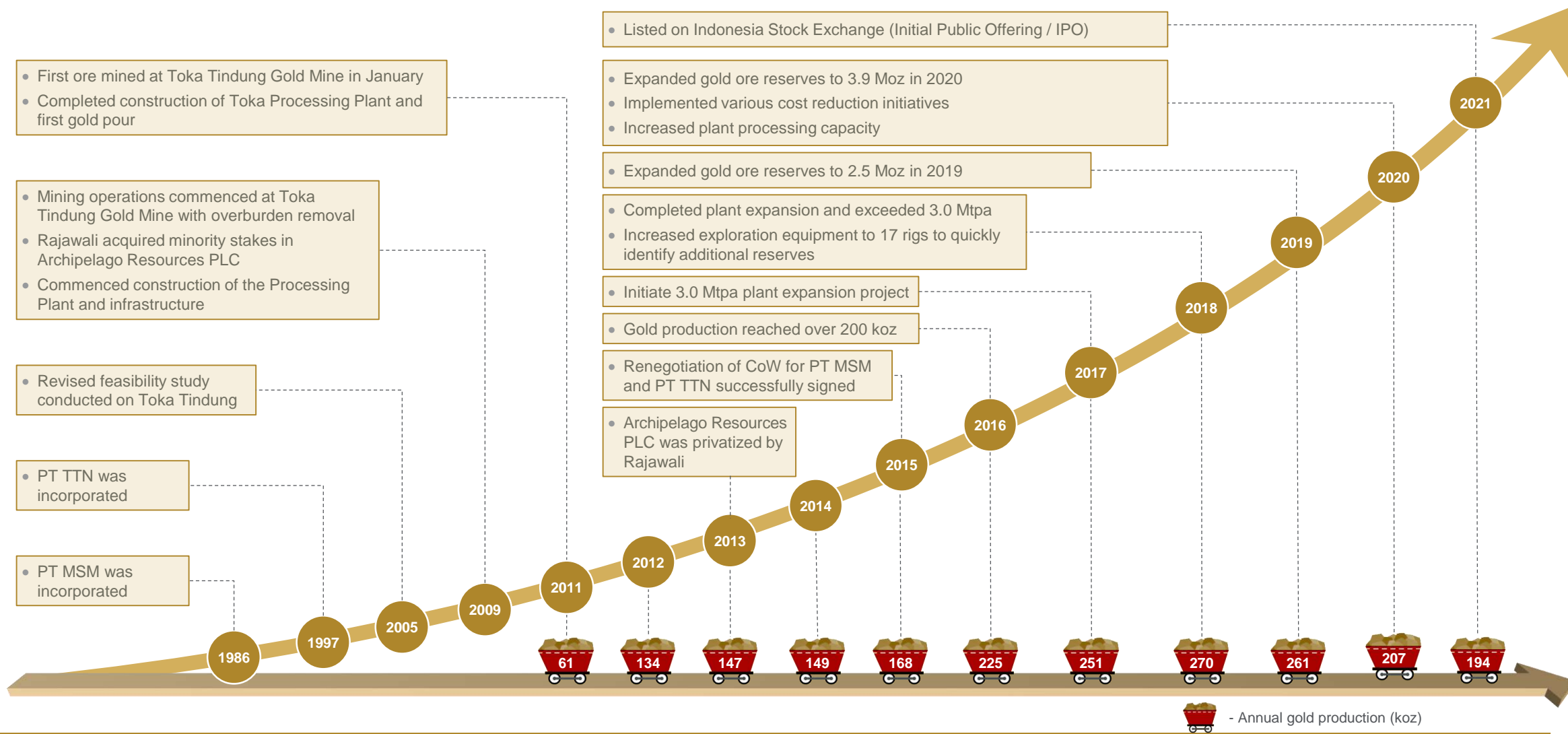


Source : Company Information

Note : (1) PT Wijaya Anugerah Cemerlang's ultimate beneficial owner is an entity controlled by Rajawali Group; (2) An investment holding company; (3) A holding company for mining services, which holds a 25.0% stake in PT GMA, our mining contractor; (4) Commenced operations in 2018 and provides general management and support services in the areas of tax, legal and accounting exclusively for Archi, PT MSM and PT TTN; (5) A joint venture company incorporated in April 2019 to produce minted gold bars for which we hold 51.0%.

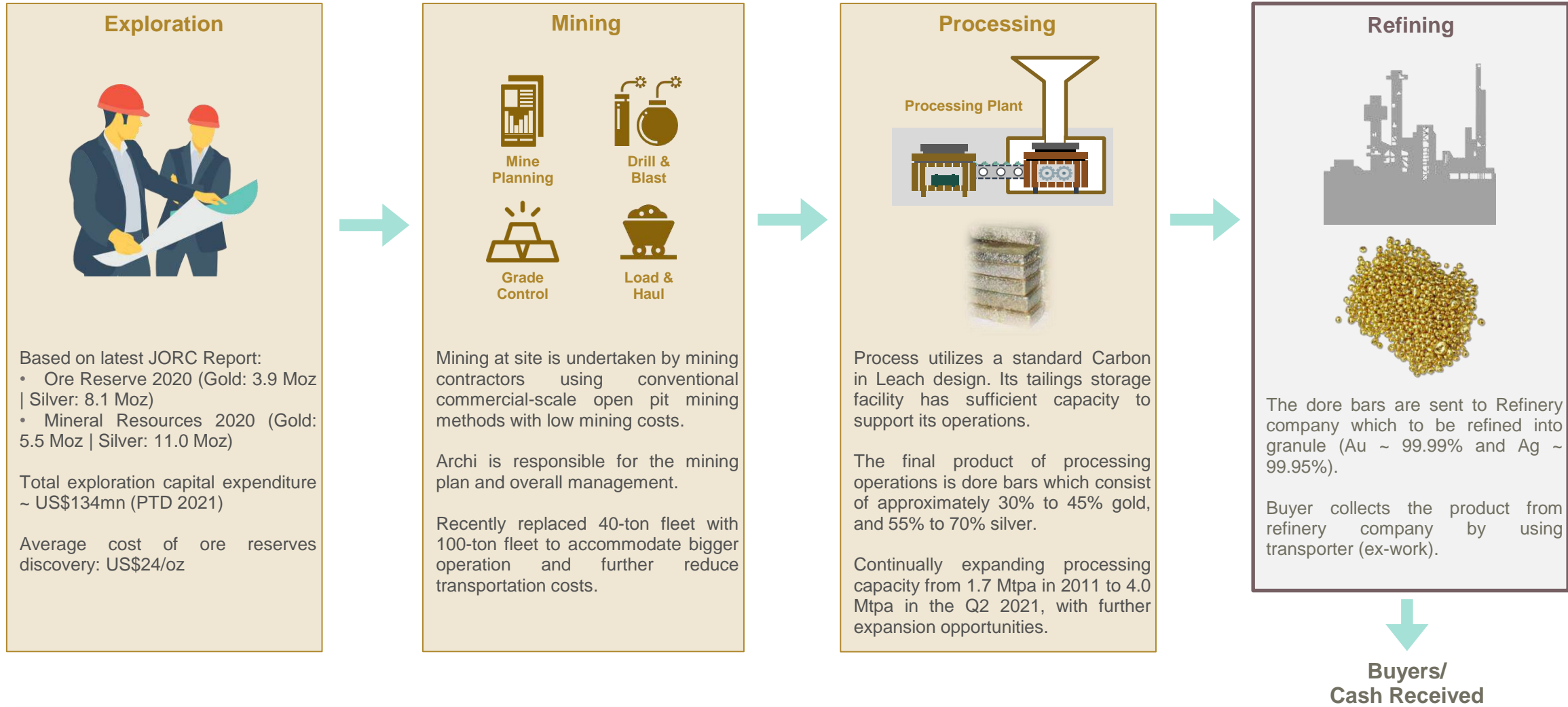
Key milestones

Archi has grown organically and consistently over the decade, exhibiting strong and solid operational track record



Source : Company Information

Business process

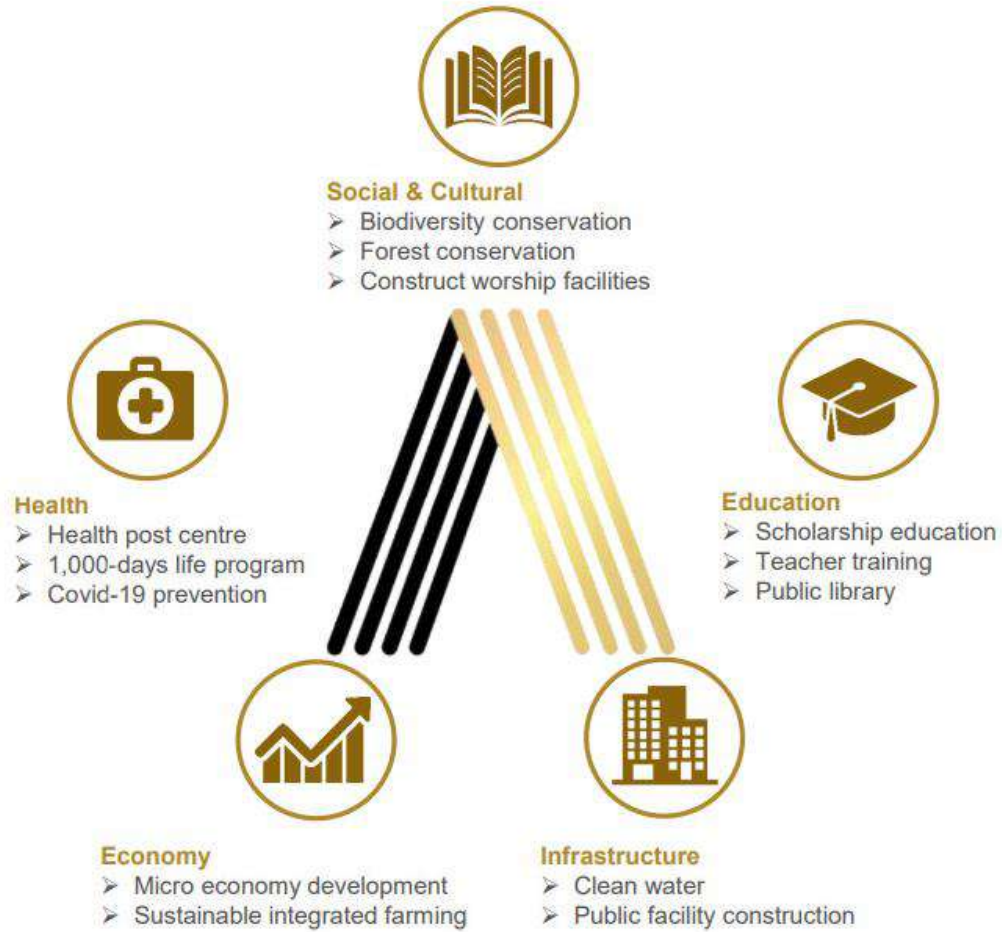


Established Exploration, Mining and Processing Operations Activities, with no Fatality Accidents

PT Elang Mulia Abadi Sempurna “EMAS” (www.lotusarchi.com)

- PT EMAS, which was established in 2019, is a JV company between PT Archi 51% & PT Royal Raffles Capital 49% and focusing to penetrate the downstream market for the gold minting bar products
- PT EMAS introduces “Emas Merah Putih” as its brand with 99.99% & SNI certified with product range from 0.1gr, 0.2gr, 0.5gr, 1gr, 5gr, 10gr, 25gr, 50gr & 100gr
- EMAS has also launched various products of gold minted bar special edition, with such themes as Idul Fitri, birthday, valentine’s day, mother’s day, anniversary and others.
- Equipped with third party software to enable customers to trace the originality of the gold product >> MSM & TTN gold mining concessions
- Nation-wide marketing network with competitive buy-back guarantee ensures the customers to get the most comfort of our product i.e. Pegadaian Galeri 24, Tokopedia, Orori, IndoGold, LakuEmas, Lino n Sons & local gold stores in Indonesia





Apr 2020 – Food & supplements donation to medical personnel



Aug 2020 – Personal Protective Equipment (APD) donation for medical personnel



Aug 2020 – Donation of Mobile PCR Lab vehicle for Covid-19 prevention program



Nov 2020 – Plant nursery home and revegetation program in areas affected by mining activities



Jan 2021 – Donation for West Sulawesi earthquake victims

Awards & recognitions

As a results from its continuous efforts, Archi has received numerous awards in environmental management, safety management and local workforce empowerment



PT Media Infobrand Indonesia 2021 Indonesia Top Digital PR Awards based on Aspects of Digital Media, Digital Sentiment, Digital Awareness



Corporate Forum for CSR Development ISDA Awards (Platinum) for Tokatindung Reference of Integrated Ecofarming Development program (TRIED) (PT Tambang Tondano Nusajaya/TTN)



Corporate Forum for CSR Development ISDA Awards (Platinum) for Posyandu (Integrated Healthcare Center) based Economic Improvement through Moringa Biscuit Production in Creating Golden Generation (TTN)



Corporate Forum for CSR Development ISDA Awards (Platinum) for Clean Water Facility Towards Healthy and Sustainable Golden Generation of Continuously Surrounding the Mining Area (TTN)



Minister of Energy and Mineral Resources UTAMA (Silver) for Environmental Management of Mineral and Coal Mining for Business Groups of Contract of Work and Special Mining Business license holders of Mineral Commodities in the year 2020 (PT Meares Soputan Mining/MSM)



Ministry of Energy and Mineral Resources PRATAMA (Bronze) for Environmental Management of Mineral and Coal Mining for Business Groups of Contract of Work and Special Mining Business license holders of Mineral Commodities in the year 2020 (TTN)



Ministry of Environment and Forestry PROPER BIRU/BLUE PROPER (Program on Company Performance Assessment Rating in Environmental Management)

Toka Tindung Gold Mine received "Vital National Object" status and certification from Ministry of Energy and Mineral Resources of Republic Indonesia in September 2020, which is believed will further assist Archi in dealings with the local regulators. Further, this certification entitles Archi to get priority of security protection from the Indonesian National Police based on the necessity and estimation of the threats and/or disruptions that might occur in the form of a security protection performance guidance.



For Further Information, please contact:

Archi Indonesia – Head Office

MENARA RAJAWALI, 19th Floor
Jl.DR. Ide anak Agung Gde Agung Lot #5.1
Kawasan Mega Kuningan – Kuningan Timur – Setiabudi, Jakarta 12950 – Indonesia
Phone : +62 21 576 1719
Email : corsec@archimining.com
Website : www.archiindonesia.com



**Archi
Indonesia**

Thank You!

