

# Archi Indonesia

## Company Overview

2020





# Archi at a Glance

Archi Indonesia (“Archi”) which owns two gold mining concessions through PT Meares Soputan Mining (“PT MSM”) & PT Tambang Tondano Nusajaya (“PT TTN”)

Operating Subsidiary	PT Tambang Tondano Nusajaya (“PT TTN”) & PT Meares Soputan Mining (“PT MSM”), both are wholly owned subsidiaries
Mining Location	North Sulawesi, Indonesia
Mine Life <sup>(1)</sup>	c. 22 years with expansion opportunity
Operation History	Commenced mining operations in 2009, first gold poured in 2011, reached gold production above 200 koz in 2018
Concession Area	39,817 hectares
Ore Reserves (2020)	Gold: 3.9 Moz   Silver: 8.1 Moz
Mineral Resources (2020)	Gold: 5.5 Moz   Silver: 11.0 Moz
Current Mining Method	Open pit (prospect of underground mining in future)
Contract Type & Expiry	Contract of Work (“CoW”), 2041 (and extendable as an IUPK for another 2x10 years)
Processing Capacity	4.0 Mtpa <sup>(2)</sup>



	<u>Gold</u>	<u>Silver</u>
Production	2018: 270 koz 2019: 261 koz 2020: 207 koz	2018: 406 koz 2019: 435 koz 2020: 363 koz
Sales	2018: 273 koz 2019: 273 koz 2020: 214 koz	2018: 391 koz 2019: 439 koz 2020: 366 koz

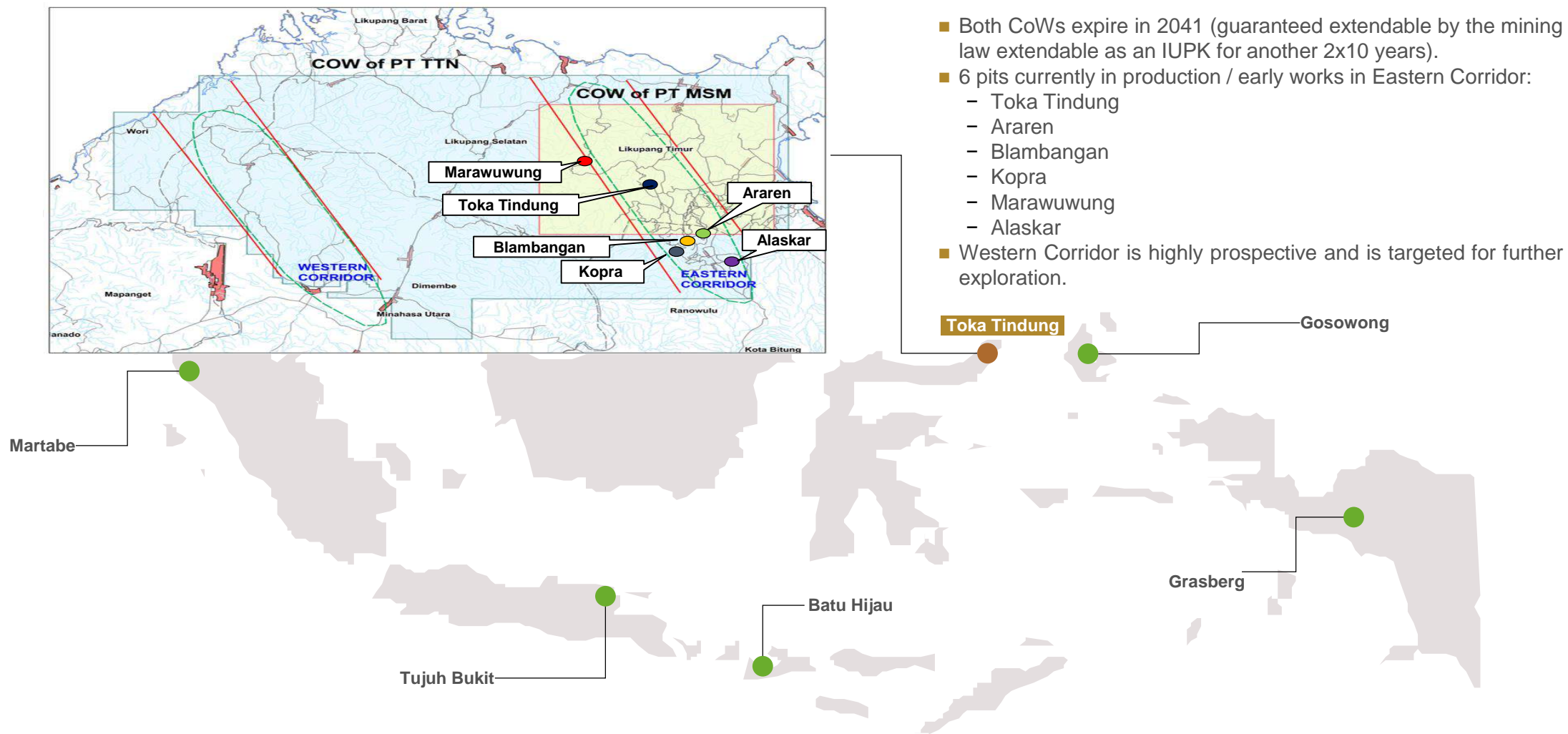
Archi is one of the Largest Pure-play Gold Producer in Southeast Asia, with 10 years of Superior and Proven Operation Track Record and Uninterrupted Production History in the Toka Tindung Gold Mine

Source : Company Information

Note : (1) SRK reserves validation case using mining and stockpiles in later years (2) Expected by Q2 2021

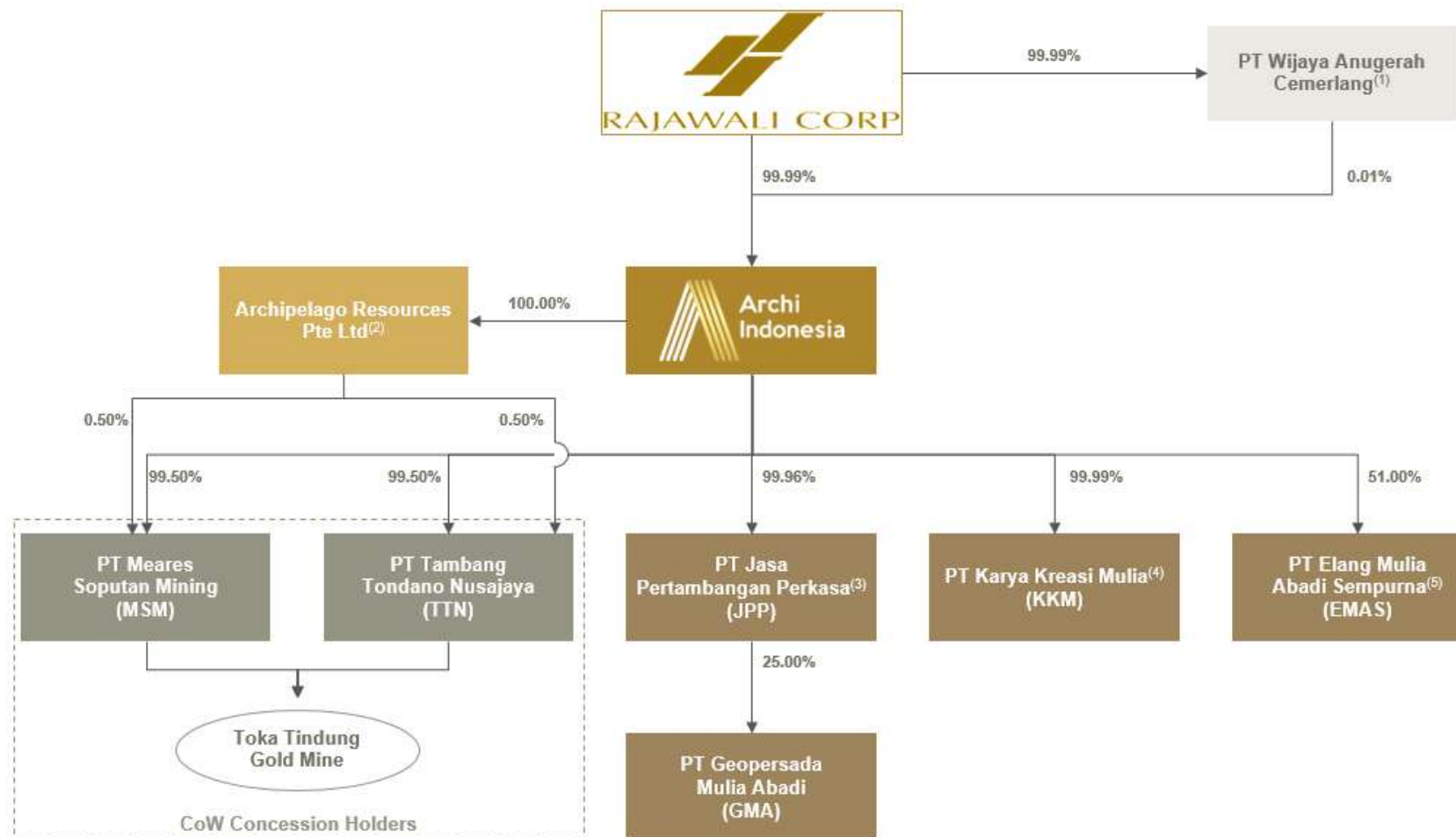
# Concession Overview

Archi has significant future development potential with high growth prospect



# Group Structure

Archi is supported by Rajawali Corpora as its shareholder, a reputable Indonesian conglomerate group with a track record of building world-class operations and creating shareholders' value

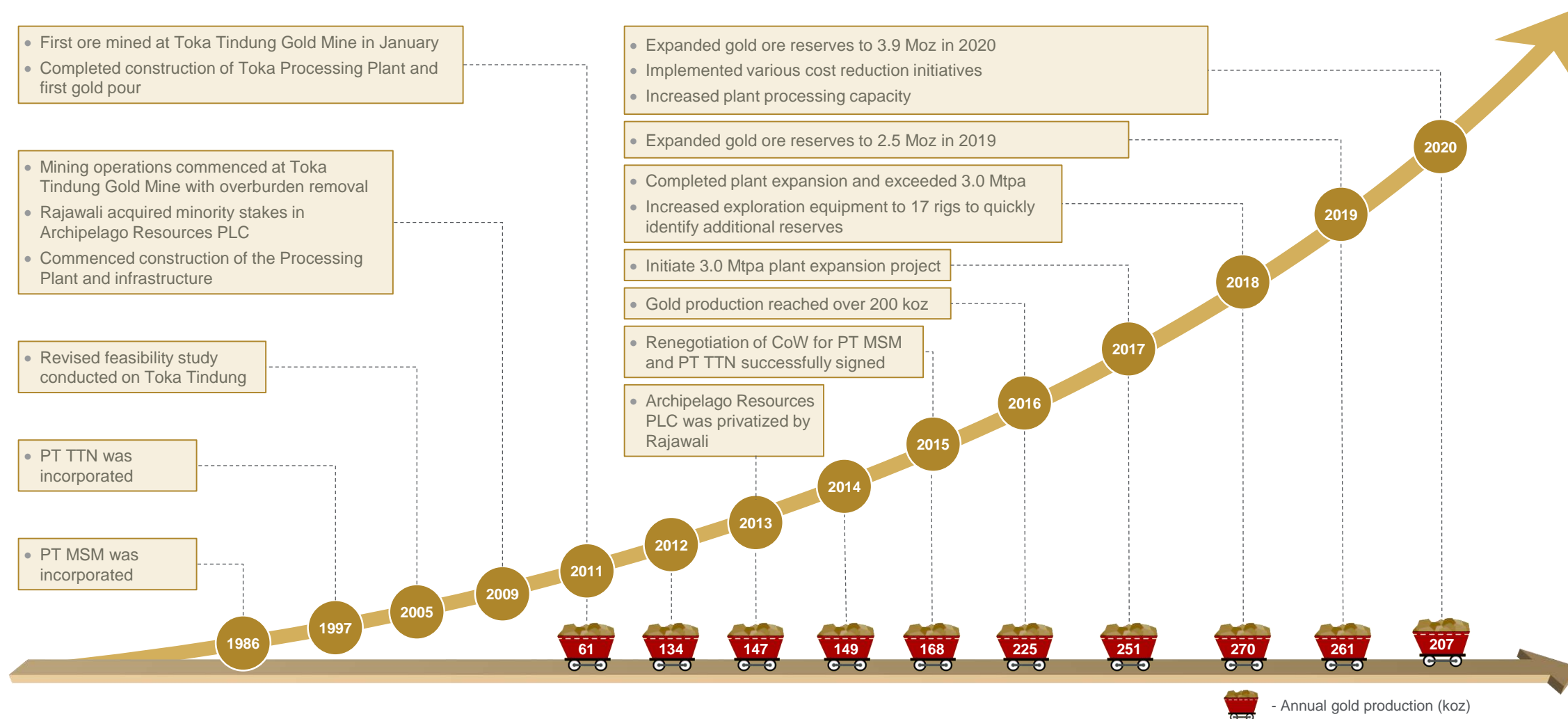


Source : Company Information

Note : (1) PT Wijaya Anugerah Cemerlang's ultimate beneficial owner is an entity controlled by Rajawali Group; (2) An investment holding company; (3) A holding company for mining services, which holds a 25.0% stake in PT GMA, our mining contractor; (4) Commenced operations in 2018 and provides general management and support services in the areas of tax, legal and accounting exclusively for Archi, PT MSM and PT TTN; (5) A joint venture company incorporated in April 2019 to produce minted gold bars for which we hold 51.0%.

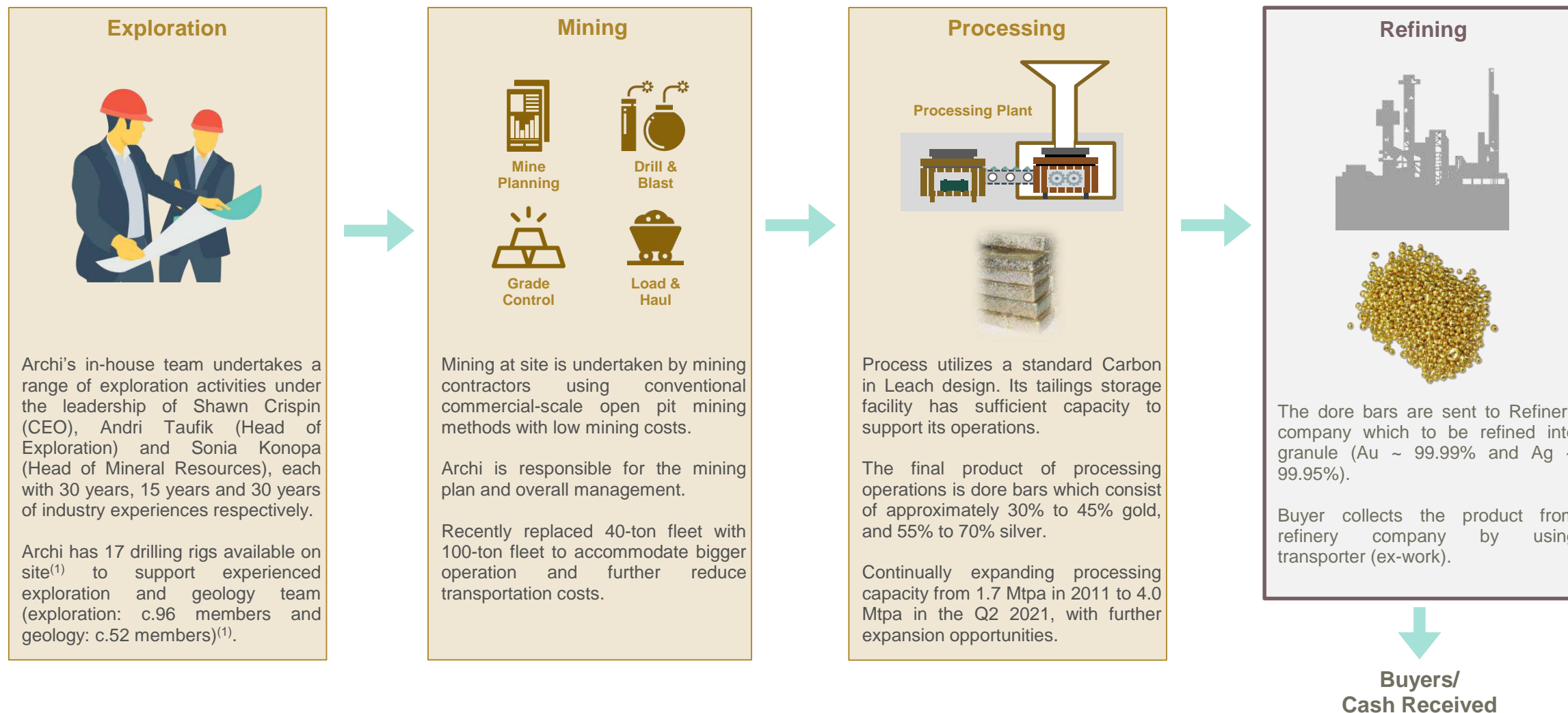
# Key Milestones

Archi has grown organically and consistently over the decade, exhibiting strong and solid operational track record



Source : Company Information

# Business Process



**Established Exploration, Mining and Processing Operations Activities, with no Fatality Accidents**



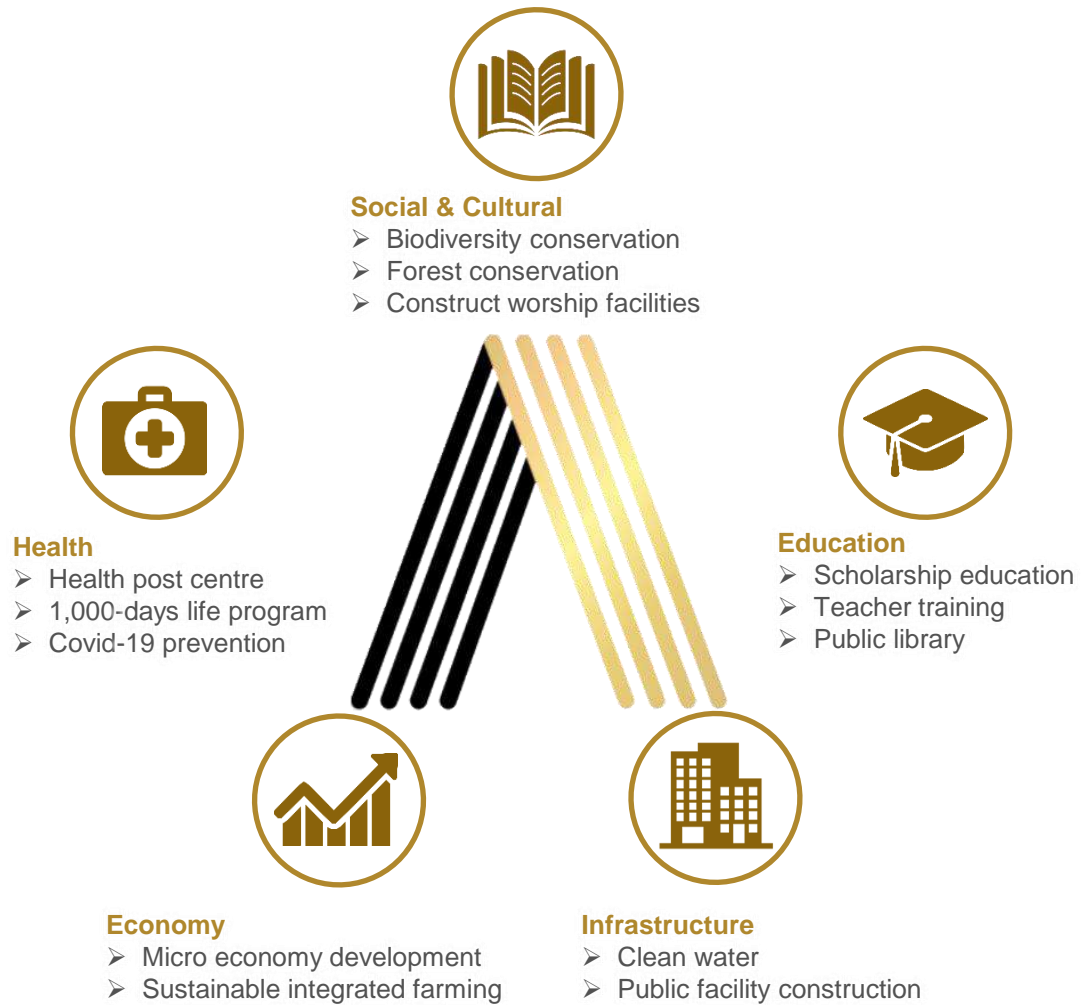
# Downstream Business

## PT Elang Mulia Abadi Sempurna “EMAS” (www.lotusarchi.com)

- PT EMAS, which was established in 2019, is a JV company between PT Archi 51% & PT Royal Raffles Capital 49% and focusing to penetrate the downstream market for the gold minting bar products
- PT EMAS introduces “Emas Merah Putih” as its brand with 99.99% & SNI certified with product range from 0.5gr, 1gr, 5gr, 10gr, 25gr, 50gr & 100gr
- Equipped with third party software to enable customers to trace the originality of the gold product >> MSM & TTN gold mining concession
- Nation-wide marketing network with competitive buy-back guarantee ensures the customer to get the most comfort of our product i.e. Pegadaian Galeri 24, Tokopedia, Orori, IndoGold, LakuEmas, Lino n Sons & local gold store in Indonesia



# CSR Activities



Apr 2020 – Food & supplements donation to medical personnel



Aug 2020 – Personal Protective Equipment (APD) donation for medical personnel



Aug 2020 – Donation of Mobile PCR Lab vehicle for Covid-19 prevention program



Nov 2020 – Plant nursery home and revegetation program in areas affected by mining activities



Jan 2021 – Donation for West Sulawesi earthquake victims



# Awards & Recognitions

As a results from its continuous efforts, Archi has received numerous awards in environmental management, safety management and local workforce empowerment



**Indonesian CSR Award (Platinum Award)** in Accessibility of Clean Water, Local Workforce Empowerment, Reduction in Mortality and Malnutrition, STEM-based School Capacity Building and International Scholarships in 2019



**PROPER (Blue rating)** in recognition of Environmental Management from the Ministry of Environment for 2012 – 2020



**ADITAMA (Gold Award)** in recognition of Mining Environmental Management from MEMR for 2013 – 2017



**UTAMA** in recognition of Mining Environmental Management from MEMR for 2017 and 2019



**IMA Award (First Place)** in Mining Safety Management from the Indonesian Mining Association in 2019



**ISDA Award (Gold)** in recognition of Community Clean Water Development Program from Corporate Forum for Community Development in 2017



**PRATAMA (Bronze Award)** in recognition of Conservation Mineral Management from MEMR in 2019

Toka Tindung Gold Mine received “**Vital National Object**” status and certification from Ministry of Energy and Mineral Resources of Republic Indonesia in September 2020, which is believed will further assist Archi in dealings with the local regulators. Further, this certification entitles Archi to get priority of security protection from the Indonesian National Police based on the necessity and estimation of the threats and/or disruptions that might occur in the form of a security protection performance guidance.

A large, detailed image of a bald eagle in flight, spread-winged, against a blue sky with white clouds. The eagle's head is white with a yellow beak, and its wings are dark with white undersides.

# Thank You

For Further Information, please contact:

## Archi Indonesia – Head Office

**MENARA RAJAWALI, 19th Floor**

Jl.DR. Ide anak Agung Gde Agung Lot #5.1

Kawasan Mega Kuningan – Kuningan Timur – Setiabudi, Jakarta  
12950 – Indonesia

*Phone* : +62 21 576 1719

*Email* : [corsec@archimining.com](mailto:corsec@archimining.com)

*Website* : [www.archiindonesia.com](http://www.archiindonesia.com)